



VILLAGE

Piazzetta  design

Gas or wood-burning fireplace with handmade majolica surround.

SURROUND WEIGHT: 35 kg

**GAS BURNING (NATURAL GAS OR LPG) IG 120**  
 INLET: in grey enamelled steel  
 FIREBOX: in Aluker®  
 GLASS: ceramic heat resistant up to 750°C  
 FUNCTION CONTROL: remote control  
 CERAMIC LOGS: standard supply  
 HEATING: convection and radiation  
 CEILING FLUE GAS OUTLET:  
 concentric pipe Ø 10/15 cm  
 WALL FLUE GAS OUTLET:  
 concentric pipe Ø 13/20 cm  
 FIREBOX HEAT OUTPUT: 11.5 kW (Natural gas)  
 10.5 kW (LPG)  
 THERMAL EFFICIENCY: 80% (Natural gas)  
 77% (LPG)  
 CONSUMPTION AT RATED HEAT OUTPUT:  
 1.1 m<sup>3</sup>/h (Natural gas)  
 790 g/h (LPG)  
 WEIGHT: 125 kg  
 RATED HEAT OUTPUT: 8.3 kW (Natural gas)  
 7.3 kW (LPG)  
 TYPE-EXAMINATION: EC certification E0780

OPTIONAL ACCESSORIES:

- river pebles
- height regulation kit

**GAS BURNING (NATURAL GAS OR LPG) IG 120B**  
 INLET: in grey enamelled steel  
 FIREBOX: in Aluker®  
 GLASS: ceramic heat resistant up to 750°C  
 FUNCTION CONTROL: remote control  
 CERAMIC LOGS: standard supply  
 HEATING: convection  
 and radiation  
 CEILING FLUE GAS OUTLET:  
 concentric pipe Ø 10/15 cm  
 WALL FLUE GAS OUTLET:  
 concentric pipe Ø 13/20 cm  
 FIREBOX HEAT OUTPUT: 11.5 kW (Natural gas)  
 10.5 kW (LPG)  
 THERMAL EFFICIENCY: 80% (Natural gas)  
 75% (LPG)  
 CONSUMPTION AT RATED HEAT OUTPUT:  
 1.1 m<sup>3</sup>/h (Natural gas)  
 790 g/h (LPG)  
 WEIGHT: 119 kg  
 RATED HEAT OUTPUT: 8.3 kW (Natural gas)  
 7.3 kW (LPG)  
 TYPE-EXAMINATION: EC certification E0780

OPTIONAL ACCESSORIES:

- river pebles
- height regulation kit

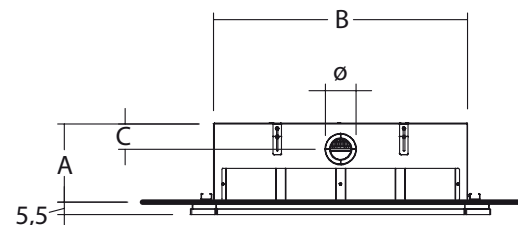
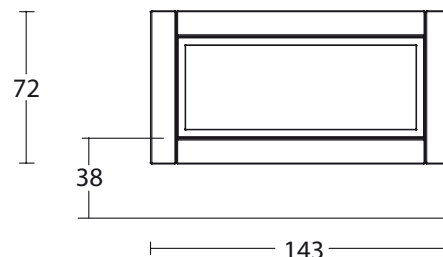
**WOOD BURNING ME 120/48**  
 INLET: in enamelled steel  
 FIREBOX: in Aluker®  
 GRATE: in Aluker® with cast iron grid  
 DOOR: rise n'fall with glass ceramic heat  
 resistant up to 750°C, may also be opened  
 as hinged door for cleaning  
 PRIMARY AIR: adjustable by hand  
 SECONDARY AIR: pre-determined  
 SMOKE DAMPER: automatic and adjustable  
 ASH DRAWER: removable  
 HEATING: natural convection or forced  
 air circulation by Multifuoco System®  
 on request  
 FLUE OUTLET: Ø 25 cm  
 NOMINAL OUTPUT: 16.5 kW  
 THERMAL EFFICIENCY: 75.5%  
 NOMINAL CONSUMPTION: 4.8 kg/h  
 MAX OUTPUT: 17,3 kW  
 MAX CONSUMPTION: 5,4 kg/h  
 WEIGHT: 350 kg  
 Laboratory measurements were made using  
 beech wood with moisture content below 20%  
 Type approval in accordance with EN13230

OPTIONAL ACCESSORIES:

- ventilation kit Multifuoco System®  
 with automatic or manual switching on and  
 off and 4-speed remote control.
- sensor kit for dual Multifuoco System®
- adjustable height kit

DIMENSIONI:

	IG120	IG120B	ME120/48
A	38,5	38,5	65
B	121	121	123,5
C	12,5	19,5	19,5
Ø	20	20	25



Measurements expressed in cm